



Lake Forest Park

SAFE HIGHWAYS

Accessible Efficient Complete

Presented to:

Committee of the Whole
(COW)

October 23, 2017

Agenda

- SR 104 Recap:
 - Cross-section updates
 - Intersections
 - Oct. 18 Public Meeting
- SR 522 Preview:
 - Guiding principles
 - Existing conditions
 - Draft cross-section options
 - Next steps: Access to transit, 145th intersection, Nov. 14 Public Meeting
- Overall Project Schedule



Draft SR 104 Cross-section Options

- Option 1 - Buffered bike lanes and sidewalks
- Option 2 – Complete sidewalks with landscaped buffers
- Option 3 - Multi-use trail on one side
- Option 4 – Hybrid of Sidewalks and Trails

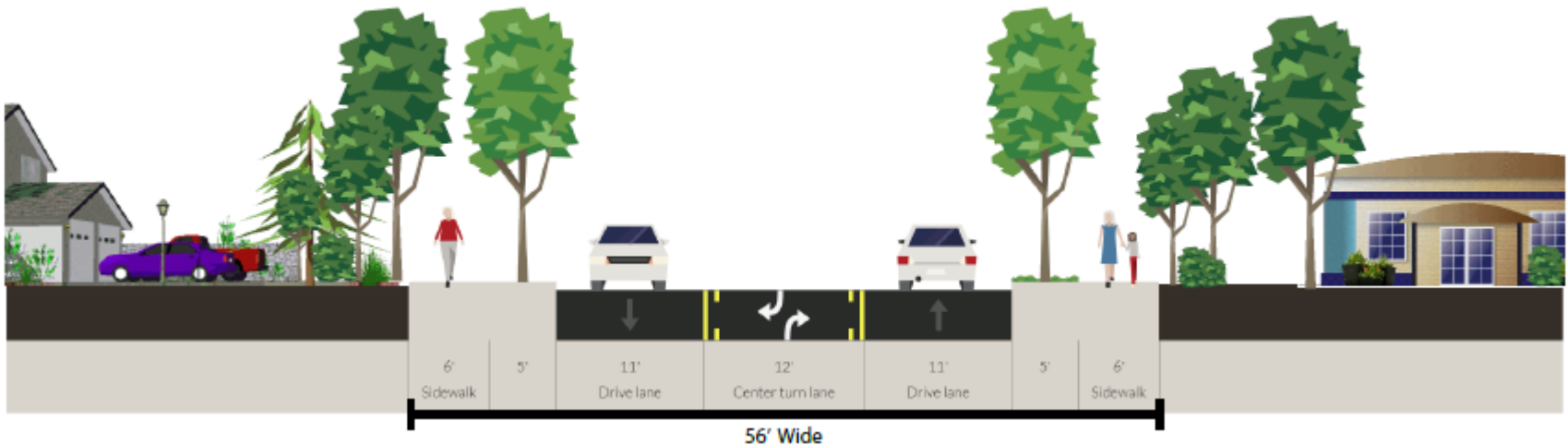
Buffered Bike Lanes & Sidewalks



- One travel lane each direction
- Sidewalk with landscape buffer on both sides
- Buffered bicycle lanes in both directions
- Left turn lane or planted median where feasible
- Assumes bike lanes start around 178th St, just north of Town Center

Sidewalks

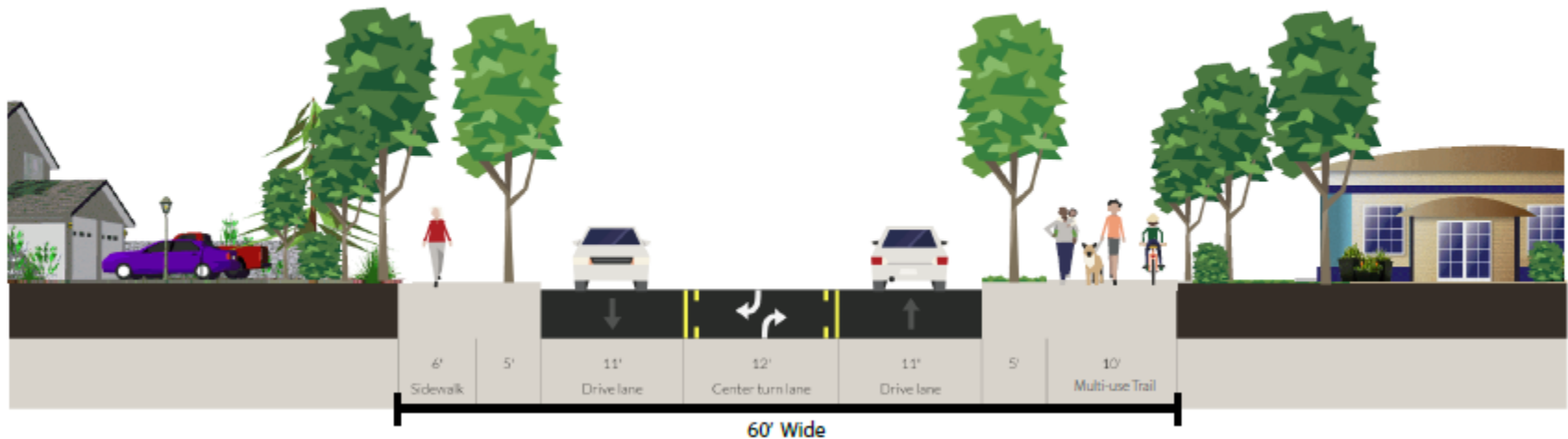
2 35th Avenue NE to 40th Place NE



- One travel lane each direction
- Sidewalk with landscape buffer on both sides
- Left turn lane or planted median where feasible
- Assume bicyclists use other local streets for travel

Multi-use Trail on One Side

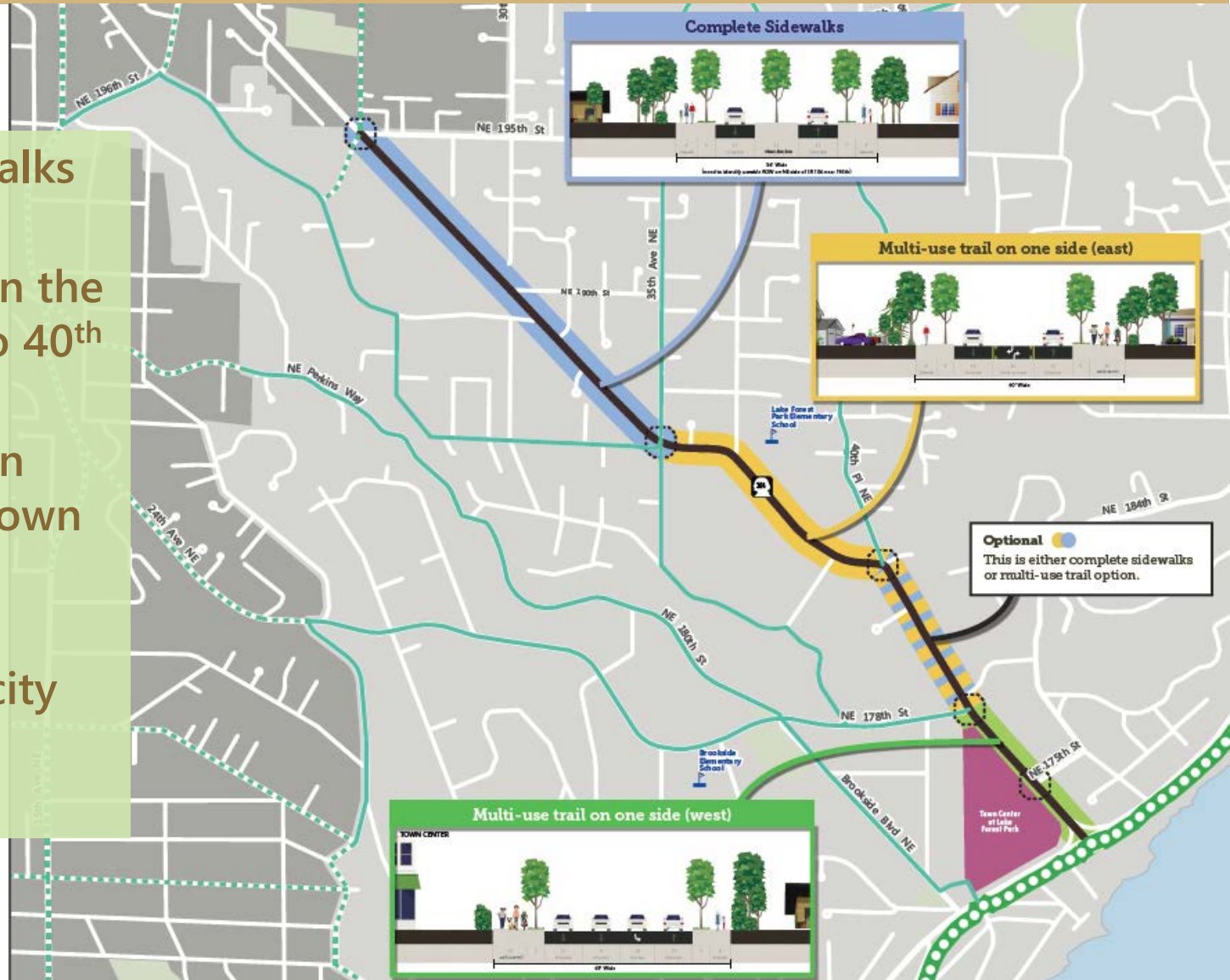
2 35th Avenue NE to 40th Place NE



- One travel lane each direction
- Multi-use path on the east side (LFP Elementary), sidewalk with landscape buffer on the west side
- Multi-use trail transitions to west side near Town Center
- Left turn lane or planted median where feasible

Hybrid Option: Sidewalks and Trails

- Complete sidewalks 195th to 35th
- Multi-use trail on the east side (35th to 40th Place or 178th)
- Multi-use trail on west side near Town Center
- Intentional connections to city bike network



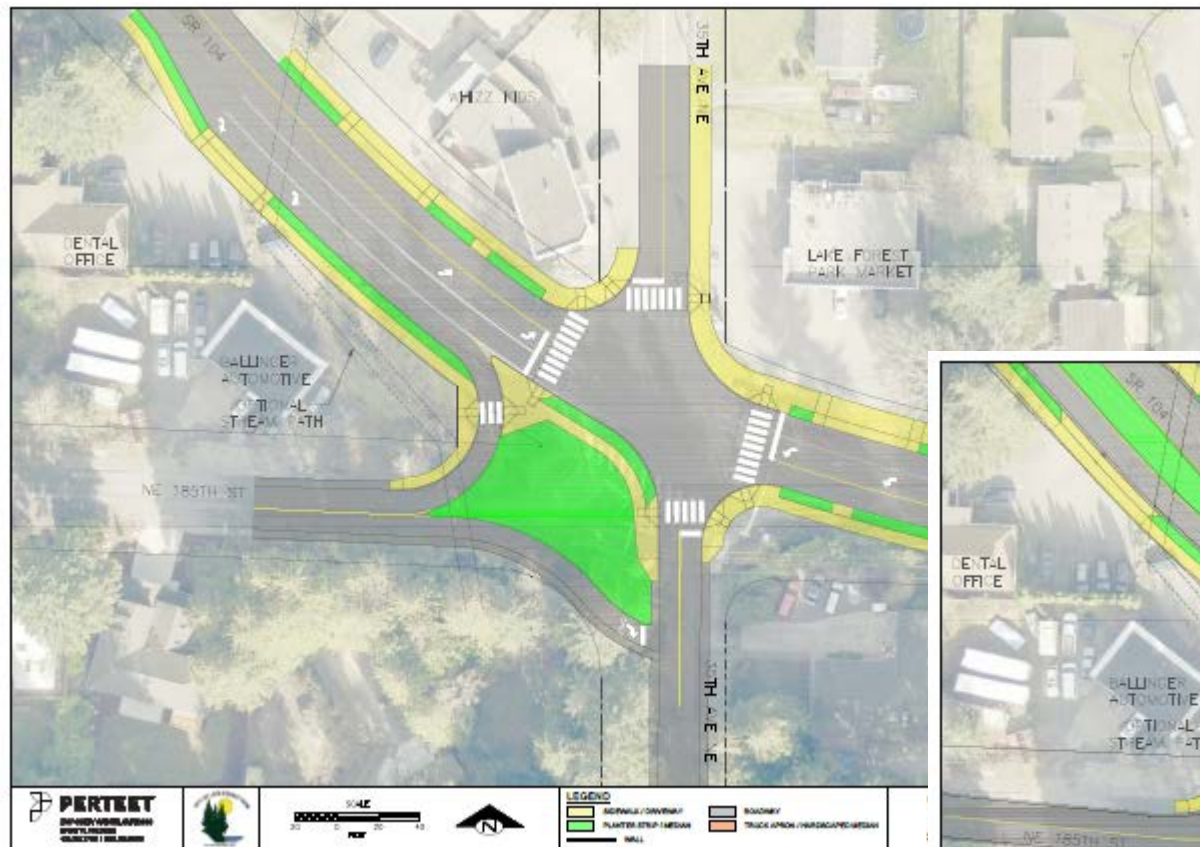
Draft SR 104 Intersection Options

- NE 195th Avenue, 35th Avenue NE, 40th Place NE, and 178 Avenue
- Where possible, evaluating roundabout and non-roundabout concepts for each

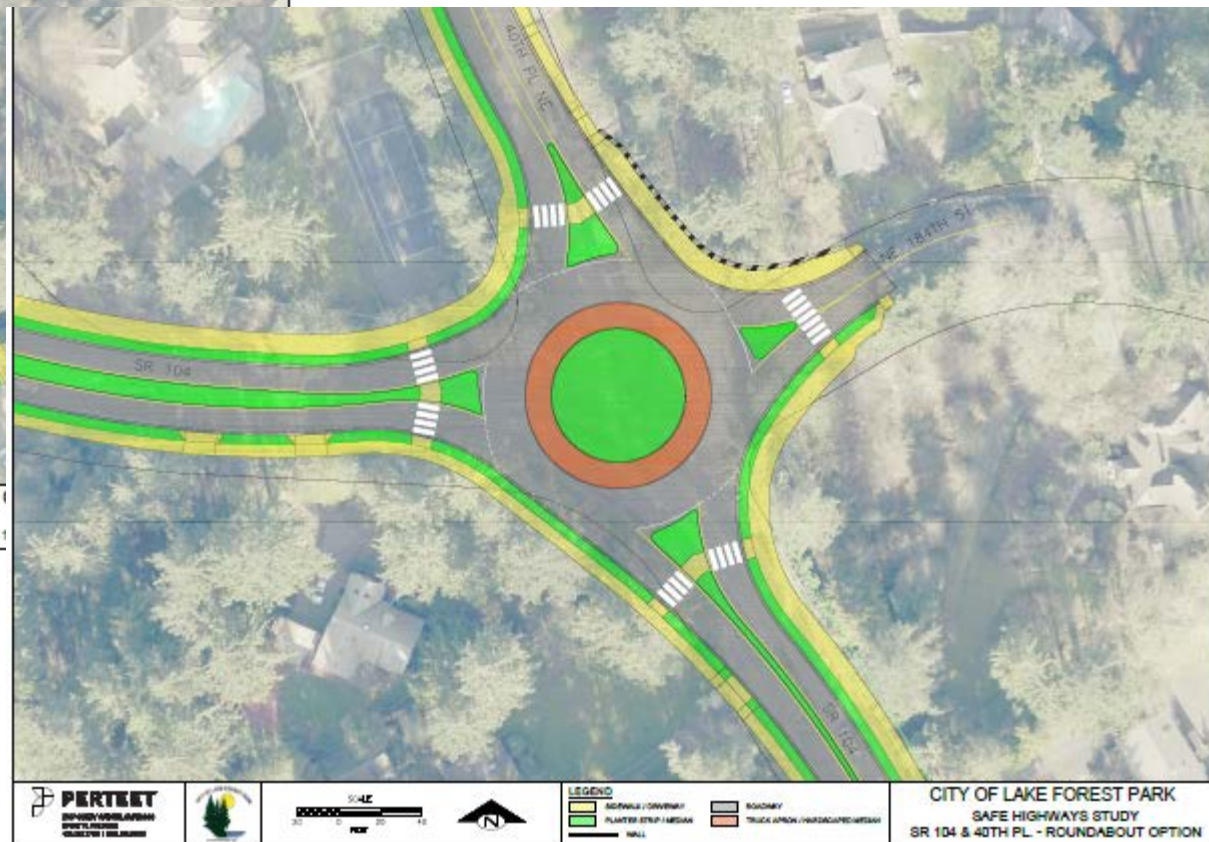
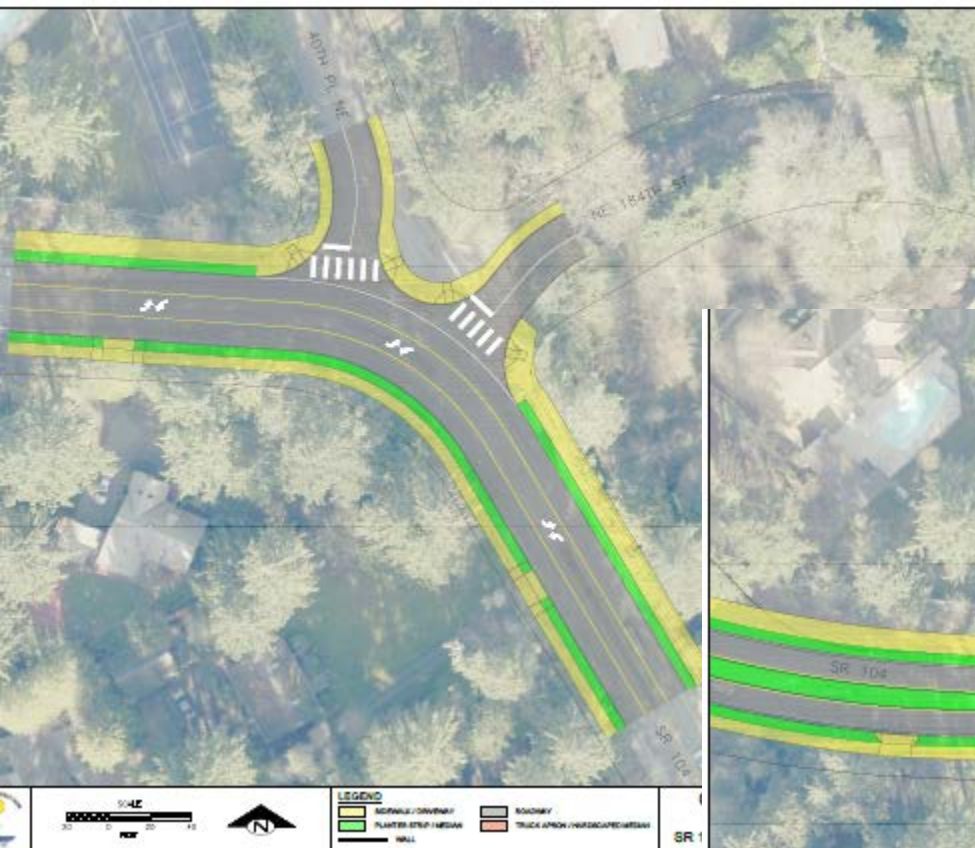
NE 195th Avenue & SR 104



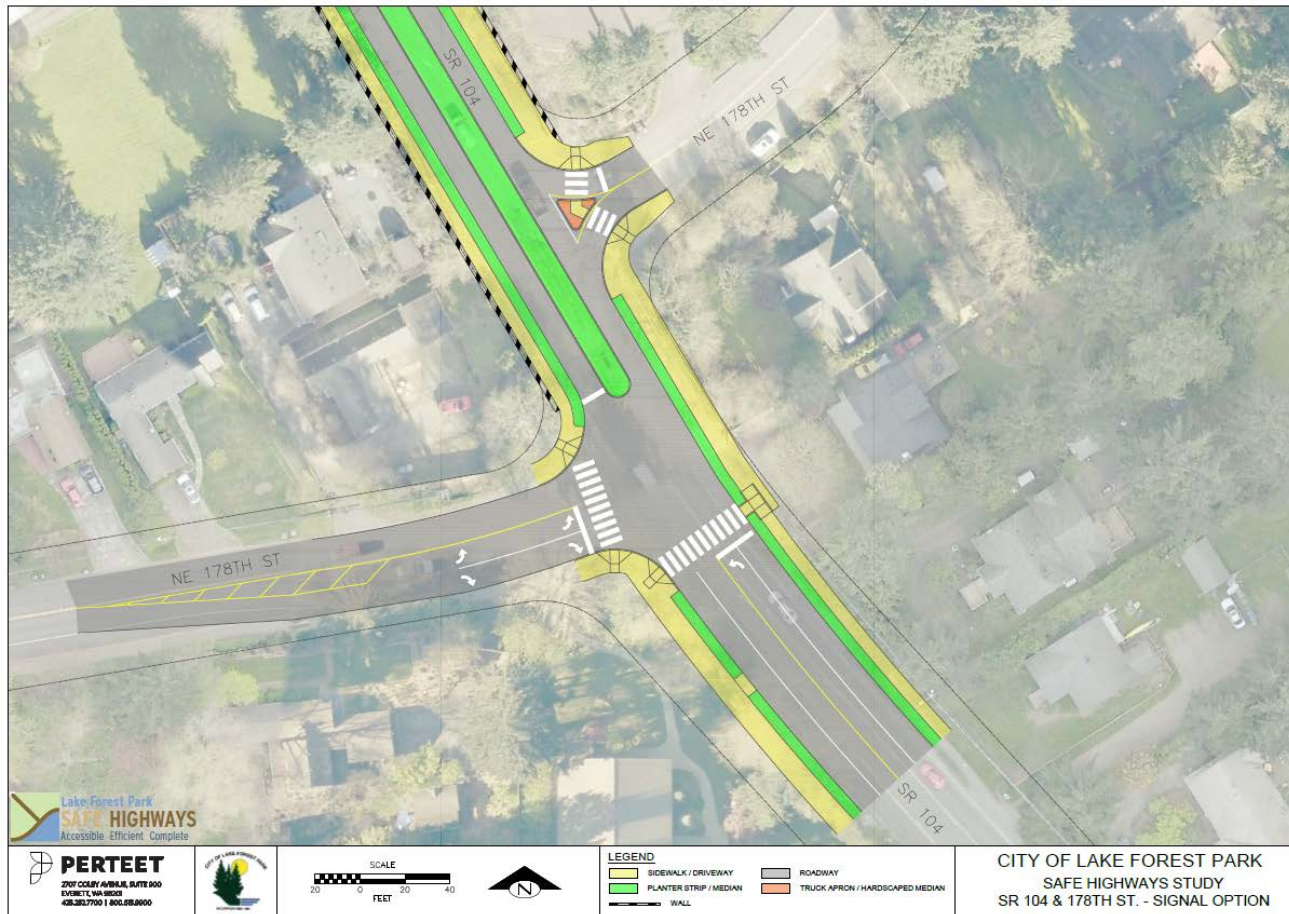
35th Avenue NE & SR 104



40th Place & SR 104



NE 178th Avenue & SR 104



Oct. 18 Open House - What We Heard



Lake Forest Park Safe Highways
Open House | October 18, 2017

Tell us what you think!

1. Comments on the INTERSECTIONS



Good designs, I favor the straight-thru designs over the roundabouts. The roundabouts might cause additional congestion and appear to be less pedestrian friendly due to YIELD & STOP signs are best for pedestrian safety.

2. Comments on the CROSS-SECTIONS



Additional sidewalks & sidewalks great!
sidewalk/multi-use trail separates from the road very important - there are parking points and.

3. Comments on the OVERALL PROJECT

Consider using pavers instead of concrete sidewalks. easy to dig up/replace easy to "re-adjust". Concrete will crack and heave from trees

- Roughly 60 people attended (45 signed in)
- Still sifting through feedback, but some of the major themes included:
 - **Walking:** People generally want to see more consistent sidewalks along the corridor
 - **Biking:** Most liked the shared use trails, but some daily cyclists were concerned about mixing with walkers
 - **Driving:** Don't add more lanes and preserve trees, but make sure we are planning for future growth in the Town Center and traffic heading towards the 185th Street Light Rail Station
 - **Roundabouts:** Mixed opinions. Many would like to see the footprint of the 35th Avenue roundabout reduced.
 - **Access:** There was discussion about the removal of left-turn access into east leg of 178th Avenue

SR 522 Preview



SR 522 Guiding Principles



- Address **safety** for all modes
- Complete **business access transit (BAT) lanes** and **full sidewalk connections** to support both BRT and local access
- **Minimize impacts** on neighboring properties (e.g. right-of-way, access, noise, visibility)
- **Improve non-motorized access to transit** and crossing opportunities to enhance local access
- **Create a corridor identity/character** and enhance the **natural environment**
- Be a leader in identifying **innovative solutions**, particularly at the Bothell Way/145th Street intersection

SR 522 Today



NE 145th St

SR 522 Today



SR 522 Today



SR 522 Today



SR 522 Today

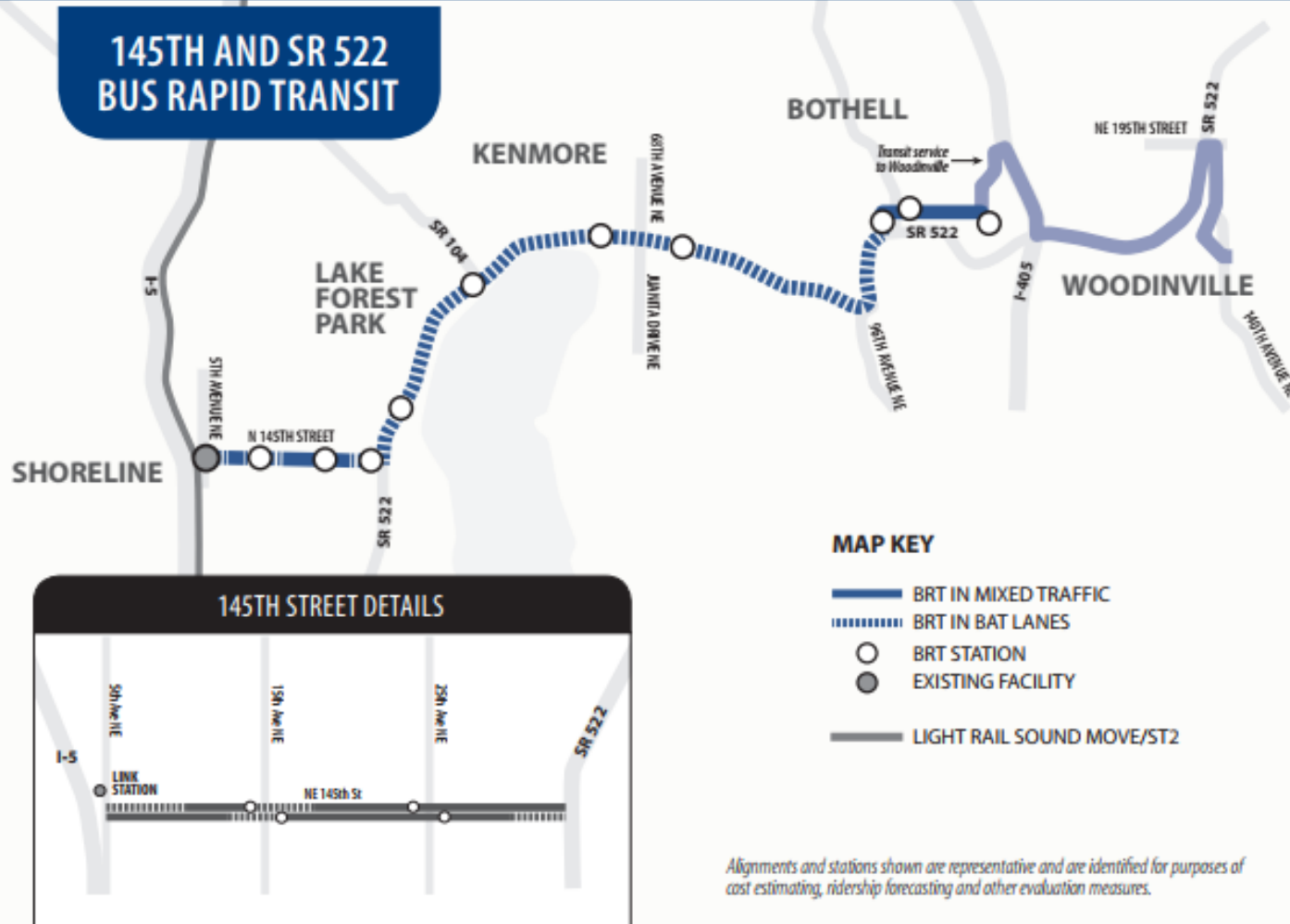


SR 522 Today



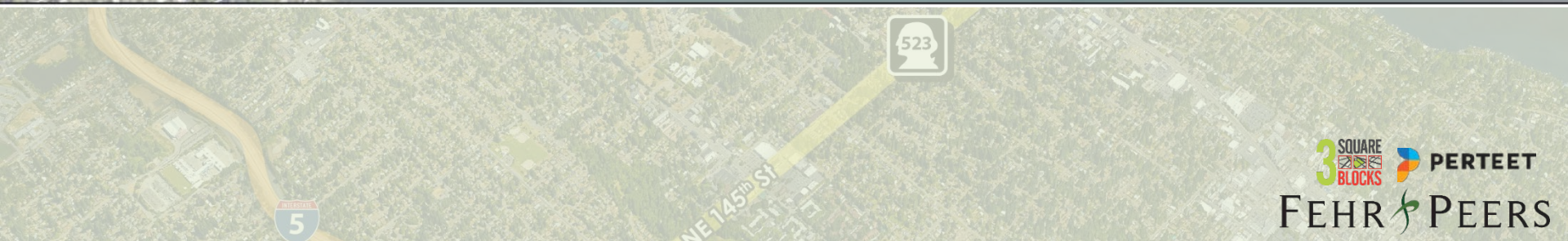
ST₃ Project

SOUND TRANSIT 3



Alignments and stations shown are representative and are identified for purposes of cost estimating, ridership forecasting and other evaluation measures.

Right-of-Way

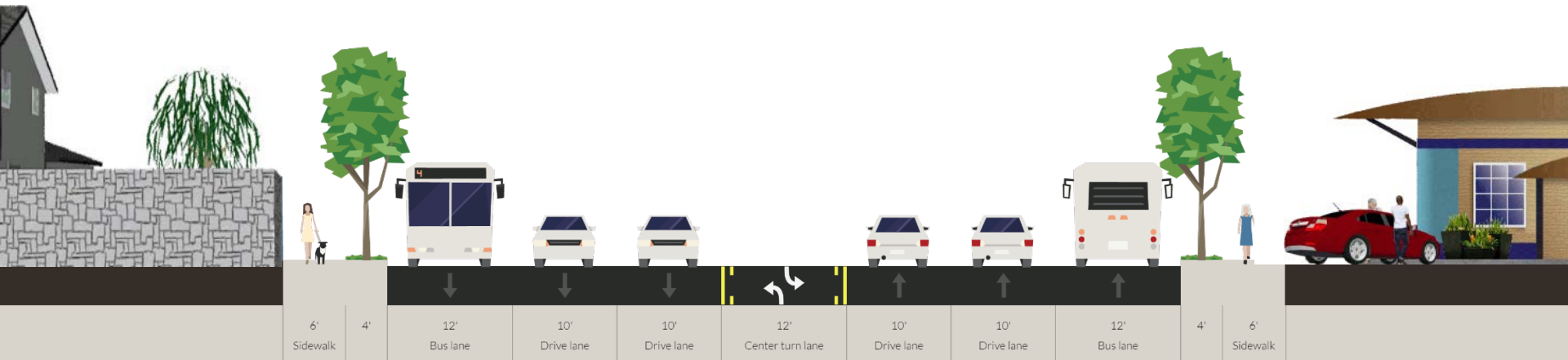


Draft SR 522 Cross-section Options

- Option 1 – Provide Center Turn Lane
- Option 2 – Limit Left Turn Access

Option 1A - Buffered Sidewalks

SR 522 - Option 1A

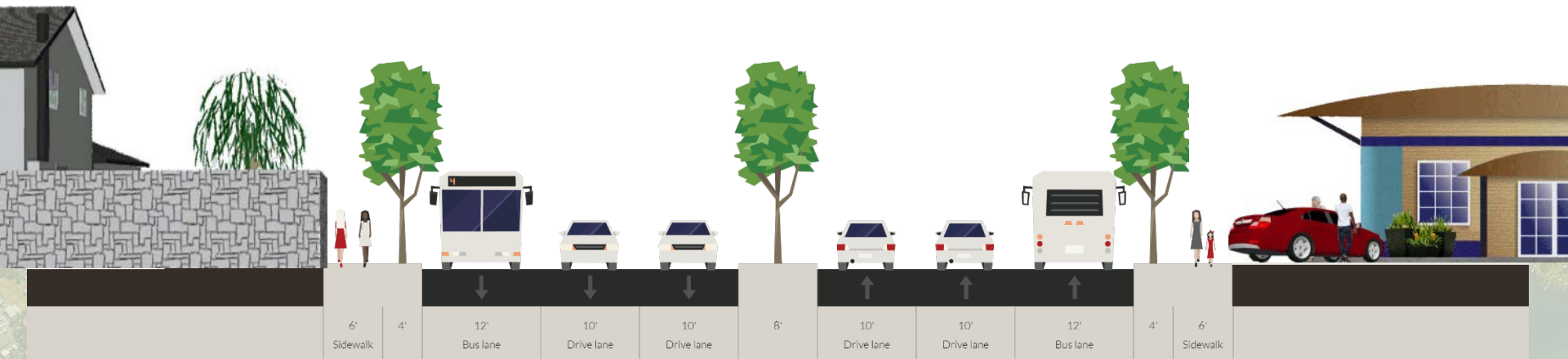


- Center turn lane
- 6' sidewalks with 4' landscape buffer (96' wide)



Option 2A –Median & Buffered Sidewalks

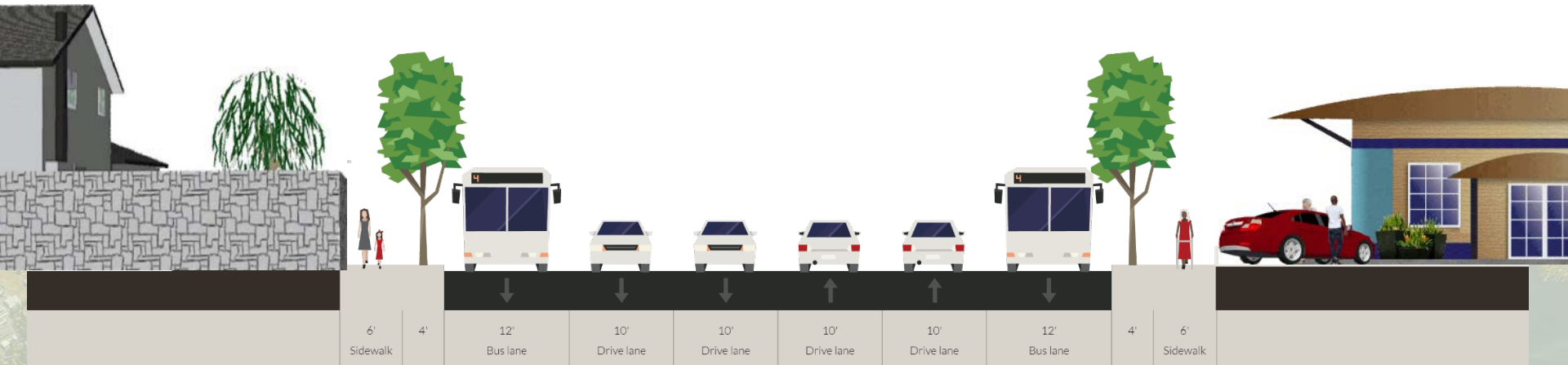
SR 522 – Option 2A



- 8' planted median
- 6' sidewalks with 4' planted buffer (92' wide)

Option 2B – Buffered Sidewalks

SR 522 – Option 2B



- No median treatment provided
- 6' sidewalk with 4' planted buffer (84' wide)

SR 522 TAC Input



- Maintain & enhance access control throughout the corridor
- Consider inclusion of medians wherever possible
- Ensure sidewalk + amenity zone is a minimum of 10 feet
- Consider lane widths (10 or 11 feet)
- Evaluate if BAT lane is necessary in narrow section between 160th and 153rd in favor of pedestrian amenities and ROW preservation



Next Steps

Meetings

- TAC #5 – SR 522 – Access to Transit & 145th intersection (Nov. 1)
- SR 522 – Open House (evening Nov. 14)
- TAC #6 – Project wrap-up (December TBD)

Website & Public Face

www.lfpsafehighways.com

Provides opportunities to provide input & project materials:

- Project Guiding Principles
- Stakeholder Outreach Findings Memo
- Planning Context Report



[HOME](#)

[PROJECT FILES](#)

[GET INVOLVED](#)

[CONTACT](#)



Making SR 104 and SR 522 Work for Lake Forest Park



The Safe Highways Project

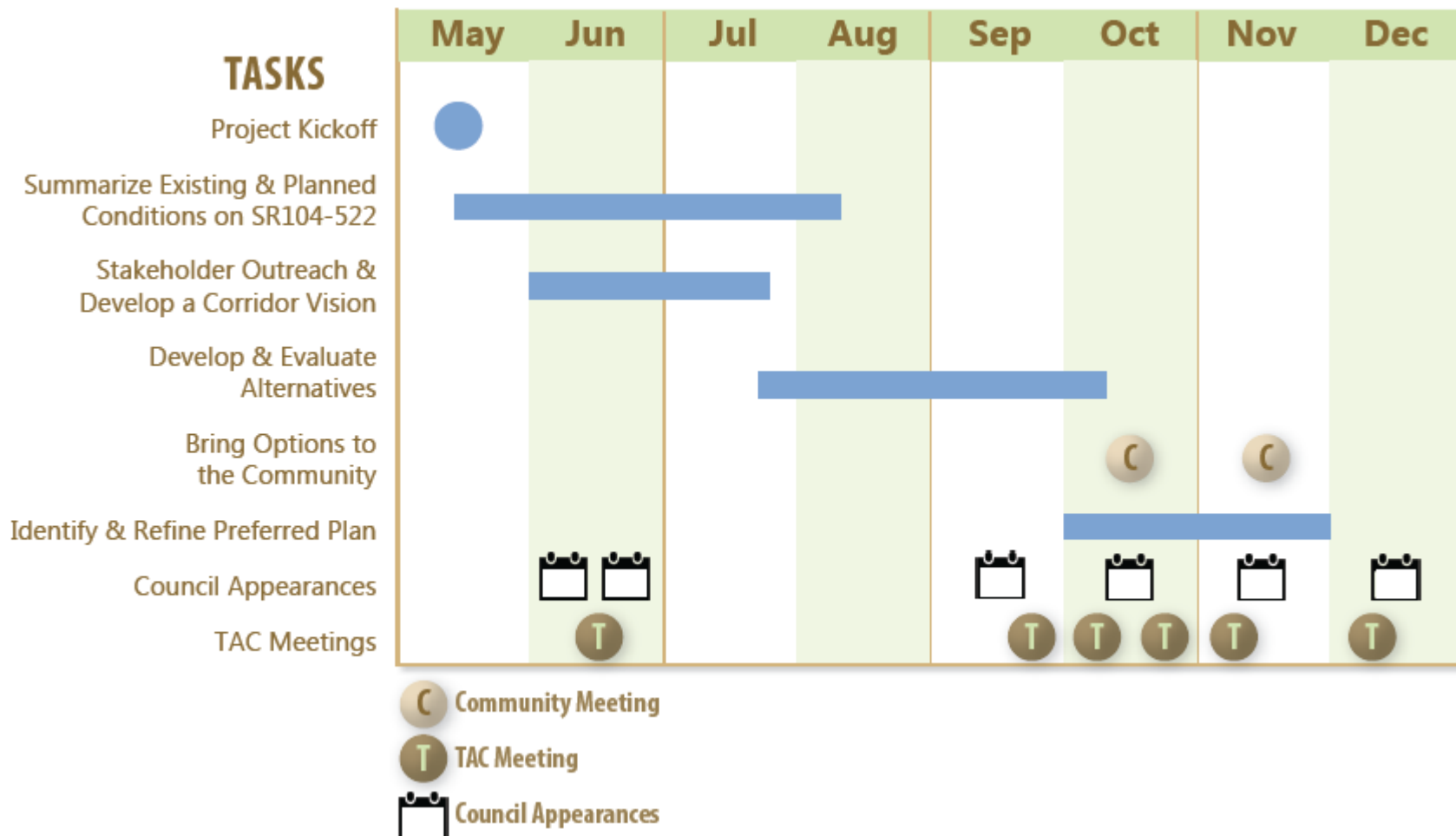
The City of Lake Forest Park is looking at the two streets (SR 522 and Ballinger Way NE (SR 104)—and exploring ways to make them safer, more accessible, and more walkable and bikeable.

Through this process, we hope to accomplish three things:

1. Examine scenarios that improve access a types of travel, including pedestrian, bicy



Project Schedule



THANK YOU

Lake
Forest Park



Lake
Washington



For more information, please contact:

Kendra Breiland, AICP

Fehr & Peers

FEHR & PEERS



NE 145th St