

Lake Forest Park

SAFE HIGHWAYS

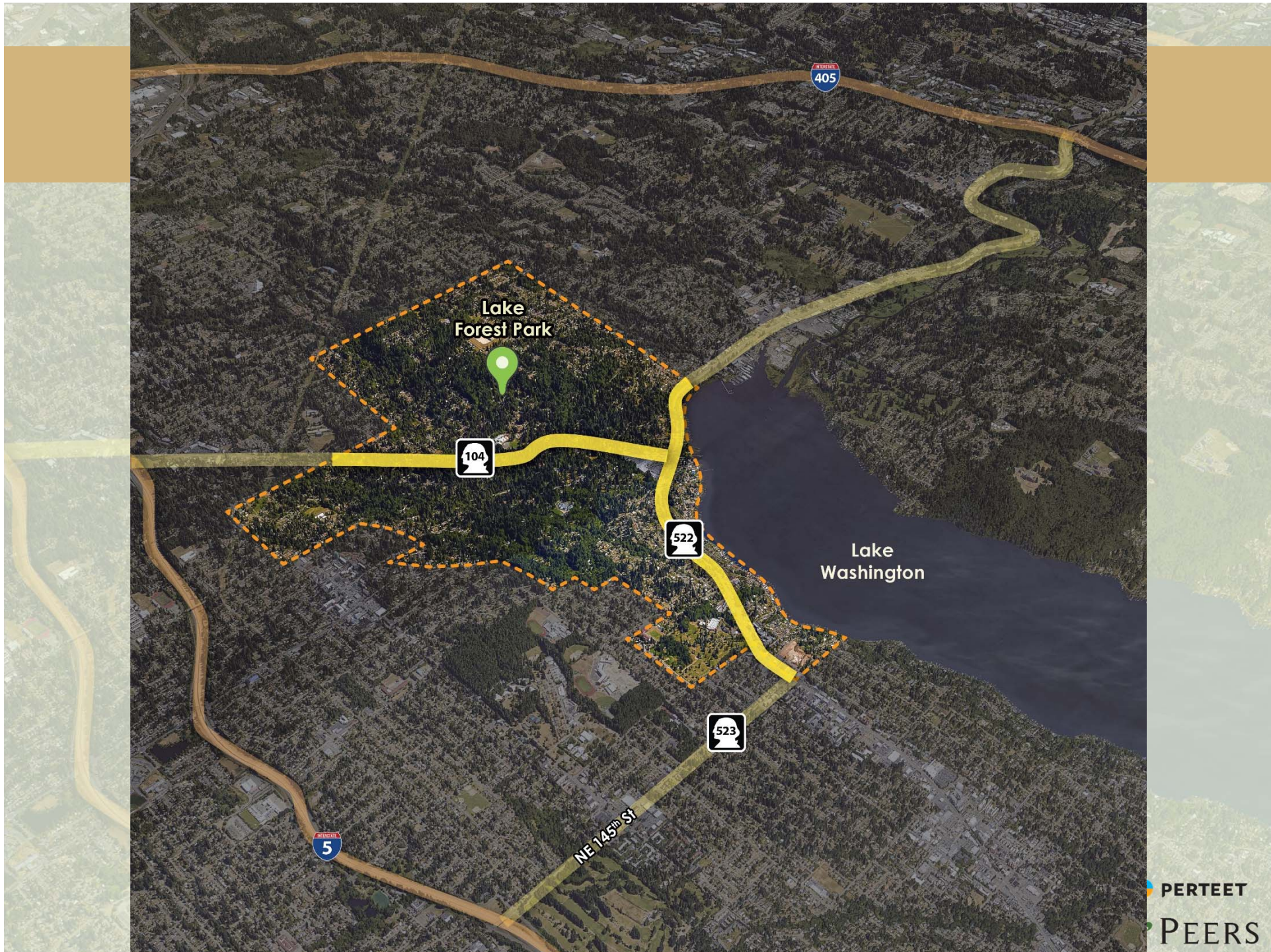
Accessible Efficient Complete

SR 104 Open House

October 18, 2017

Agenda

- Welcome
- What is this project?
- What do we know about the SR 104 corridor today?
- What we want to hear from you!
- Station layout



What is the Project?

Comprehensive Corridor Study

Complete connections for all modes

- ✓ Inviting connections for walking & biking
- ✓ Completion of the BAT lanes and consideration of P&R
- ✓ Access control & intersection treatments to maintain mobility

Supported by the community

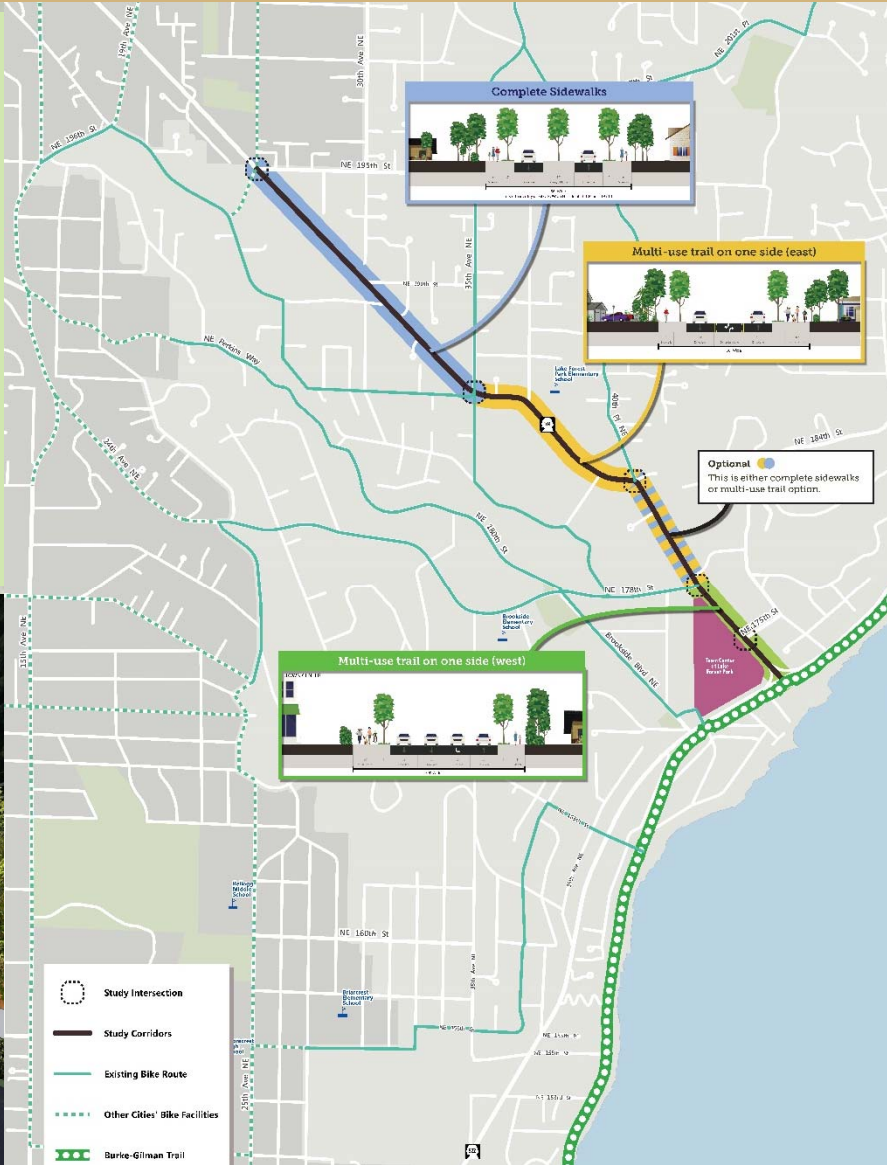
- ✓ Distinct corridor visions
- ✓ Integration with Safe Streets project
- ✓ Public support for recommended improvements recognizing years of construction

Realistic & implementable

- ✓ Sound operations analysis and modeling
- ✓ Right of way considerations known
- ✓ Project phases considered
- ✓ Recommendations have to work

SR 104 Products

- More detailed Corridor Plan including:
 - Preferred cross sections
 - Intersection concepts
 - Potential project phasing



Stakeholder Interviews

- Completed interviews with key findings documented from:
 - Business owners
 - Residents
 - Interest groups (Cascade Bicycle Club, Friends of Third Place Commons)
 - Merlone Geier (Town Center Owner)
 - Neighboring cities (Mountlake Terrace, Shoreline, Kenmore, Seattle)



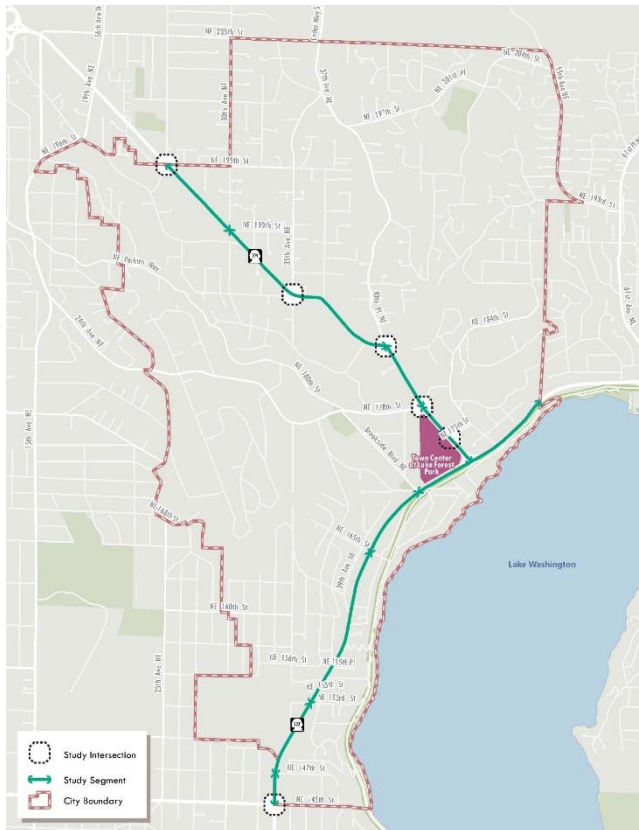
SR 104 Guiding Principles



- Address safety for all modes
- Maintain the corridor's unique identity and natural landscape
- Take a phased approach that provides benefits over time
- Consider draw on city's financial resources in selecting design solutions; as well as positioning improvements well for regional, state and federal investment
- Protect natural environment and encourage low impact design approaches
- Plan corridor to discourage neighborhood cut-through traffic
- Minimize impacts on neighboring properties (e.g. right-of-way, access, noise, visibility)

Planning Context Report

Documents existing conditions, opportunities, and challenges for each segment



Context & Land Use



Ped/Bike Amenities



Transit



Vehicle Operations



Safety



Utilities/Stormwater/ROW

SR 104 Today



SR 104 Today



SR 104 Today



SR 104 Today



SR 104 Today



SR 104 Today



SR 104 Today



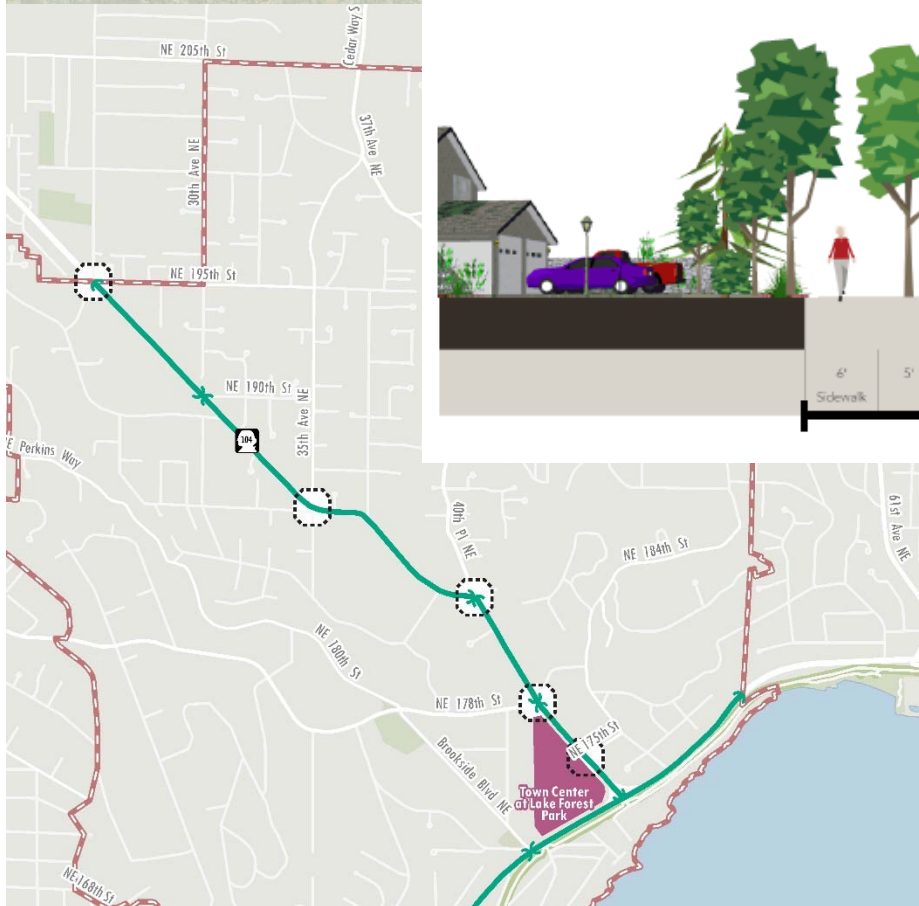
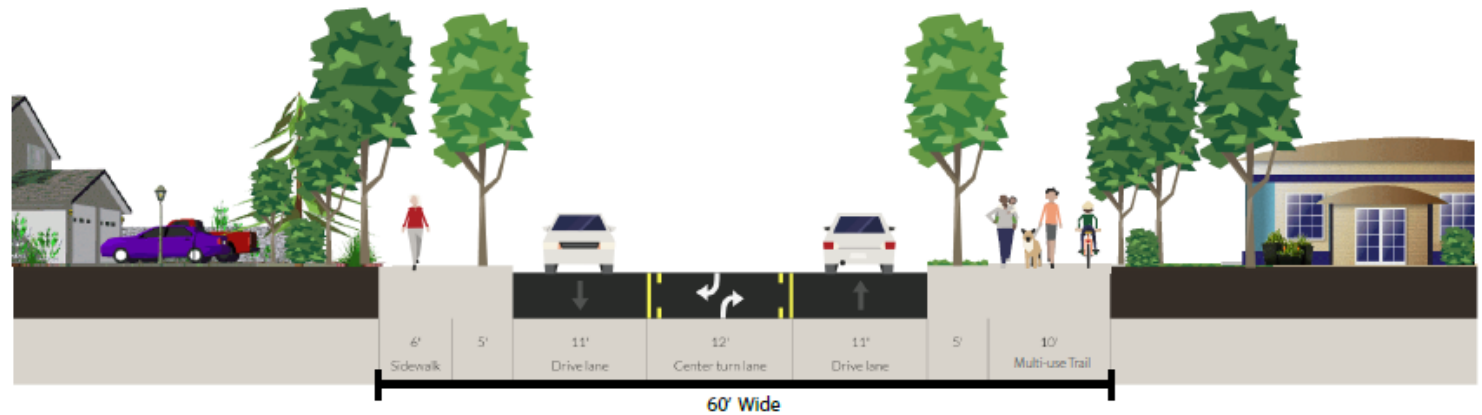
SR 104 Today



What We Want to Hear From You

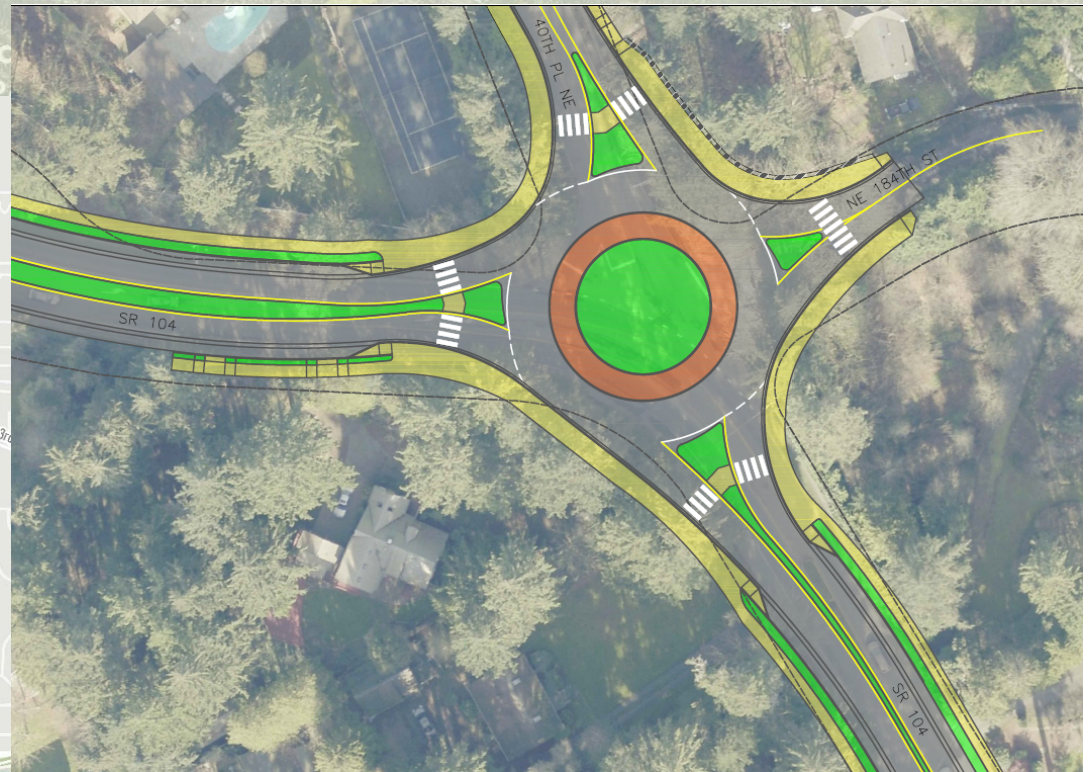
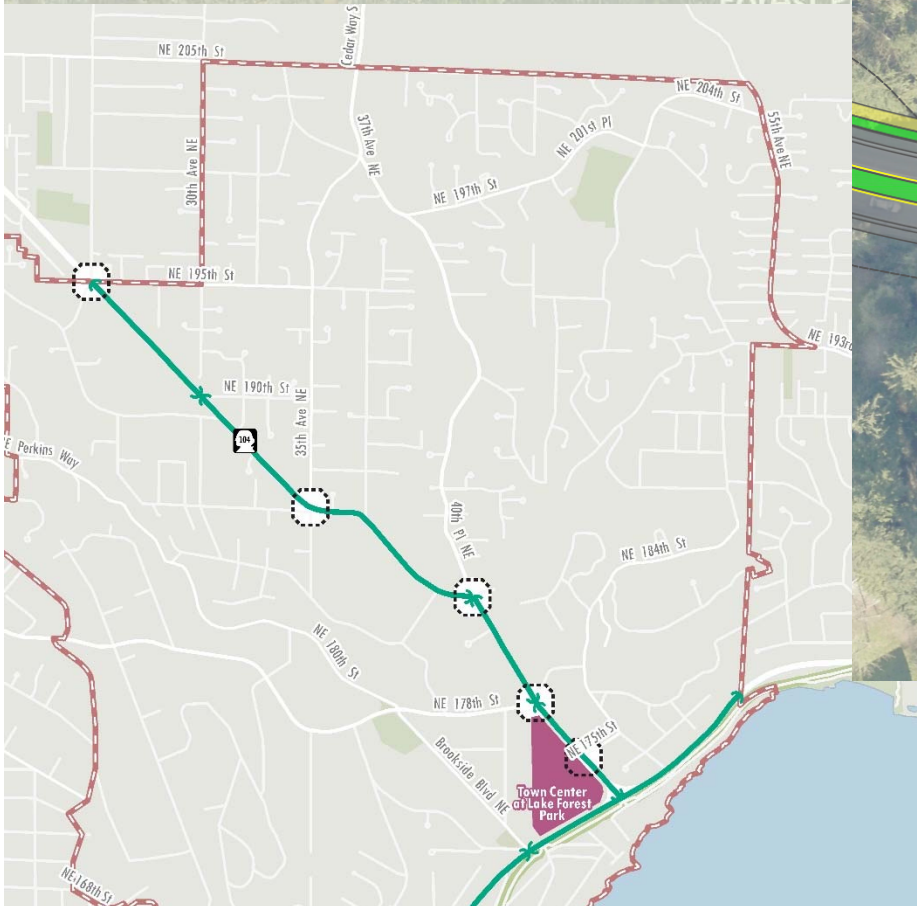
Cross-section Options

2 35th Avenue NE to 40th Place NE



What We Want to Hear From You

Intersection Concepts



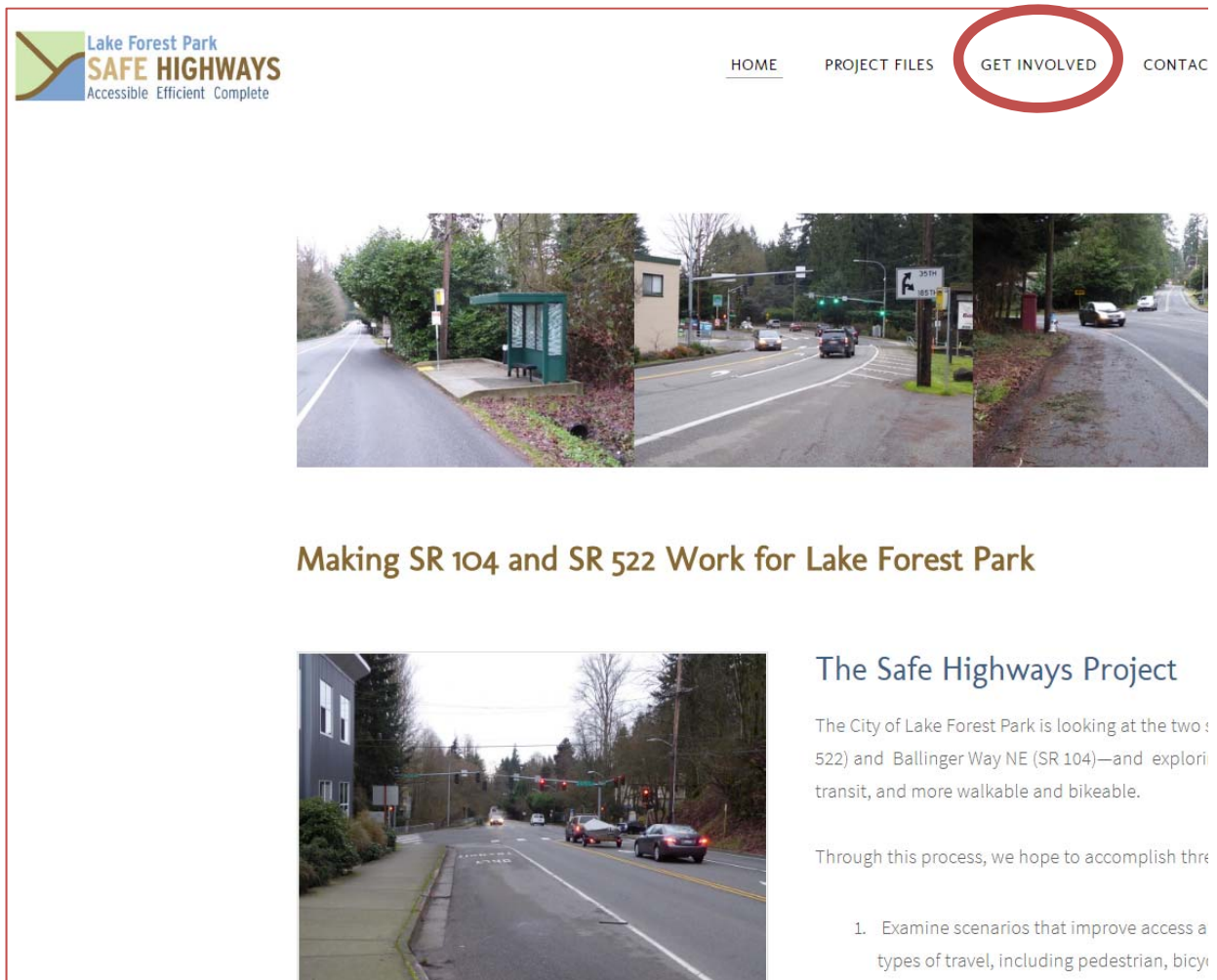
Website & Public Face

www.lfpsafehighways.com

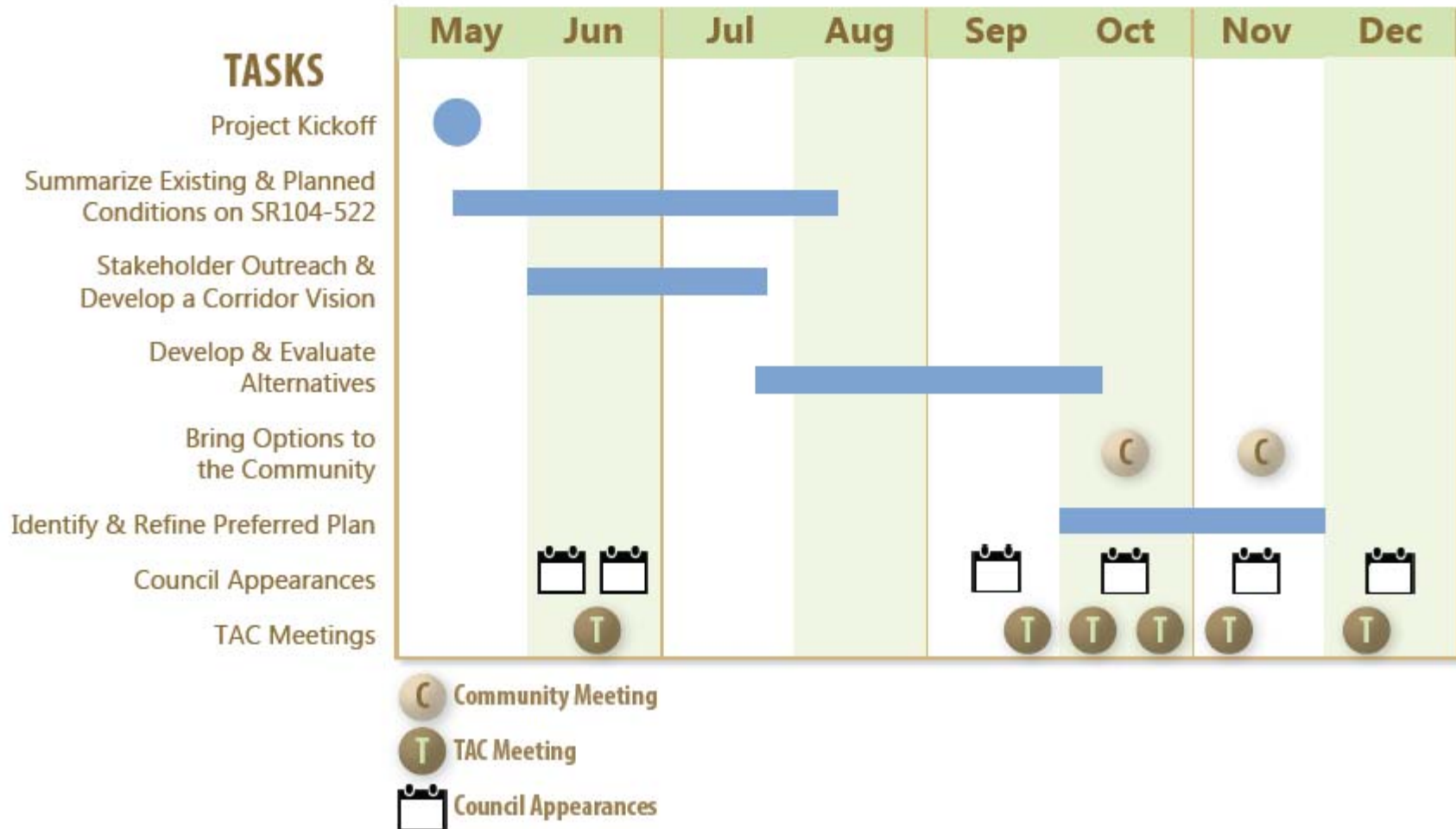
Provides opportunities to
provide input

& project materials:

- Project Guiding Principles
- Stakeholder Outreach Findings Memo
- Planning Context Report



Project Schedule



November 14th Open House: SR 522



THANK YOU

Lake
Forest Park



Lake
Washington

For more information, please contact:

[Kendra Breiland, AICP](#)

Fehr & Peers



FEHR & PEERS



NE 145th St